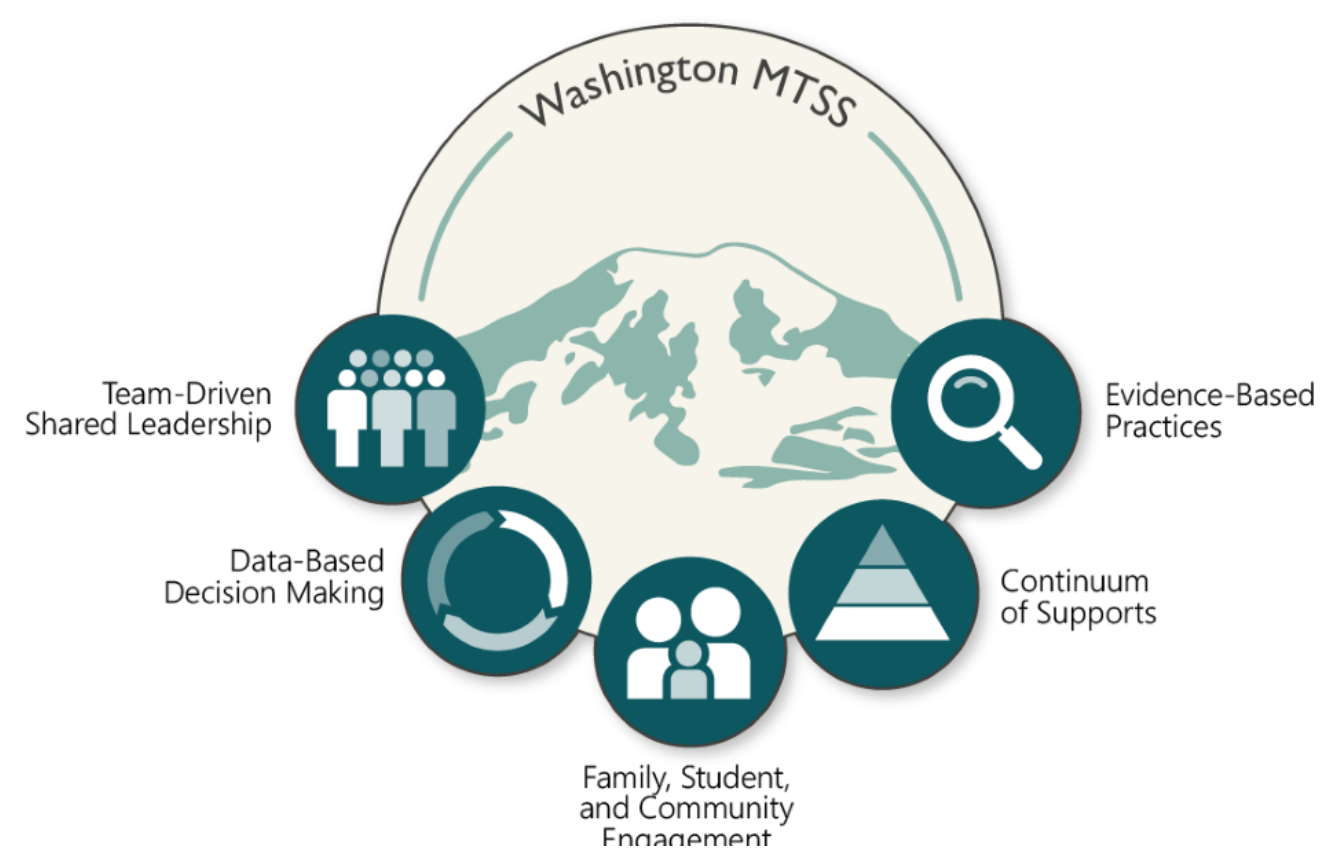


# Multi-Tiered System of Supports Implementation Cohort



## Training, Coaching, & Technical Assistance



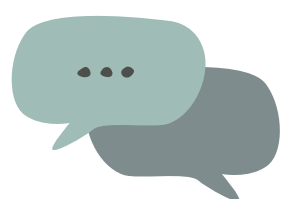
### State-Wide Professional Development

*6x per year the district leadership team will participate in virtual PD on the five components of MTSS.*



### Professional Learning Groups

*Monthly regional meetings to dive deeper into the PD content, share resources, and work as a team.*



### District Leadership Coaching Sessions

*90 minutes per month of district-specific technical assistance and coaching.*



### Weekly Check-Ins

*Between your Regional Implementation Coordinator and your district designated MTSS Champion.*



### Annual District Capacity Assessment

*The DCA is a tool used to identify areas and success in the implementation of MTSS.*

Through a partnership with OSPI and the ESD's, districts have the opportunity to apply for MTSS implementation and scale-up support.

*Year 1: District Level*

*Year 2: Building Level*

*Year 3: Continued Support*

*Grant applications will open in March of 2022, followed by a joint ESD and OSPI interview to assess fit.*

## If you are interested...

### Request a Listening Session with your ESD

We want to hear about your district's mission and vision for MTSS.

### Explore as a District Leadership Team

Start an exploration session with your team on MTSS to assess readiness, fit, and capacity.

### Complete the Application



## Questions? Contact:

Tammy Woodard

*Multi-Tiered System of Supports Professional Learning Coach*

*Educational Service District 113*

twoodard@esd113.org

(360) 464-6700



Washington Office of Superintendent of  
**PUBLIC INSTRUCTION**



Capital Region  
**ESD 113**

*For more information on MTSS in Washington State visit:*

<https://www.k12.wa.us/student-success/support-programs/multi-tiered-system-supports-mtss>